

German Sub-Station



Fibrelite Trench Covers Installed over Cable Chamber in German Sub-Station

Fibrelite trench covers have replaced integrated steel and concrete panel providing protective covering for a cable chamber at a German sub-station.

The facility employs maintenance operatives who need to regularly lift the trench covers in order to make checks and repairs to the cabling. However the previously installed covers weren't easy to open because each one weighed around 200 kg!



The original steel and concrete covers with a depth of 17cm

The Composite Solution

Although the client had to make some adjustments to the existing rebate, Fibrelite's FRP composite, light-duty trench covers proved to have a number of advantages over traditional materials. Firstly, the covers are lightweight – typically a third of the weight of an equivalent-size metal or concrete cover – and can be lifted by workers using the Fibrelite specialist lifting handles instead of specialist lifting equipment.

In addition, the ergonomically designed lifting handle has the added benefit of eliminating the risk of back injury and crushed fingers for operatives.

An anti-slip finish is an additional safety benefit with non-slip treads moulded into the product at the manufacturing stage making Fibrelite covers a safer alternative to concrete or metal whatever the weather conditions.

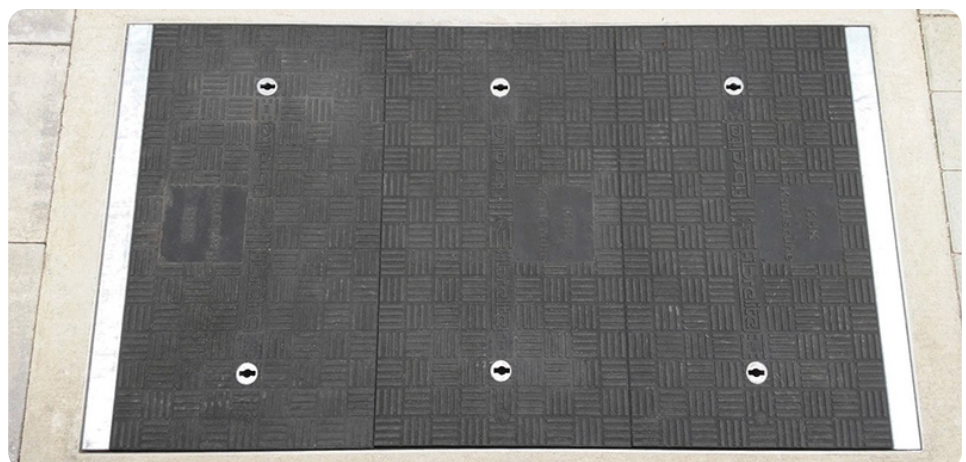


Fibrelite trench panels installed over the chamber

The Maintenance-Free Solution

Fibrelite's composite covers are available in a wide range of sizes, colours and load ratings.

They are maintenance-free, durable and very strong as a matter of course.



Covers can be moulded with custom logos

For more information on Fibrelite's product range please contact us:

UK Office:

Tel: + 44 (0) 1756 799 773

Email: covers@fibrelite.com

US Office:

Tel: + 1 919 209 2404

Email: covers@fibrelite.com

Malaysia Office (Asia Pacific):

Tel: + 44 (0) 1756 799 773

Email: covers@fibrelite.com