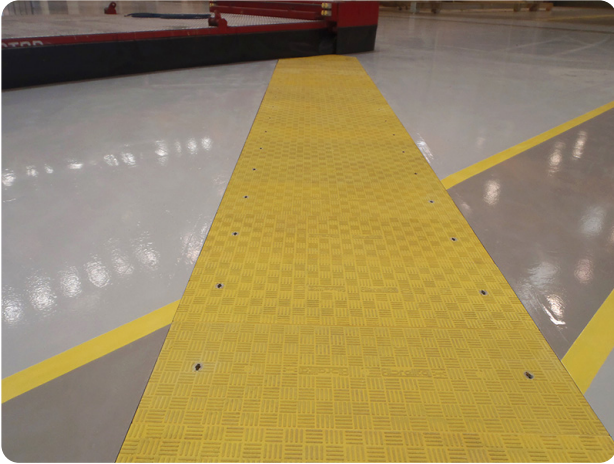


Fibrelite Supply Bespoke Trench Covers over Concrete Trenches that house Essential Pipework and Service Supplies



The Fibrelite yellow C250 (25 tonne) load rated standard duty trench access covers



Essential service pipework required for the production process

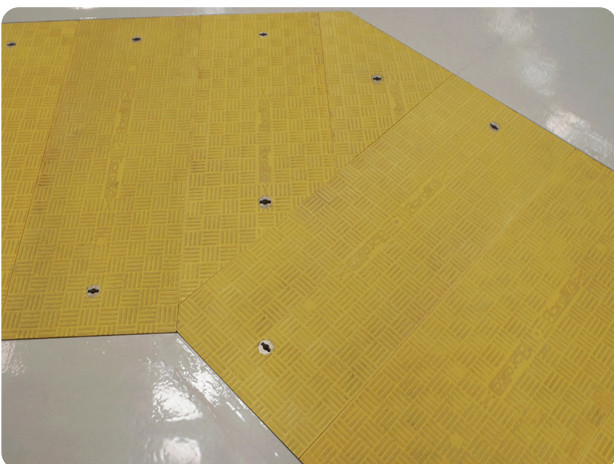
Fibrelite Supply Trench Covers for Leading UK Aerospace Facility

Fibrelite's range of standard and bespoke covers were designed and manufactured for this complicated application. The main requirement was easy access for operators who regularly need to enter these trenches that supply the manufacturing plant with essential services.

The production areas need to have fully flexible workstations with constant movement of parts and equipment. As new wing assemblies are required the support stations move and therefore the services also move. The panels are lifted regularly to ensure production areas are working efficiently. For operators working within the facility, ease of access and safety are critical.



Complex corner trench design



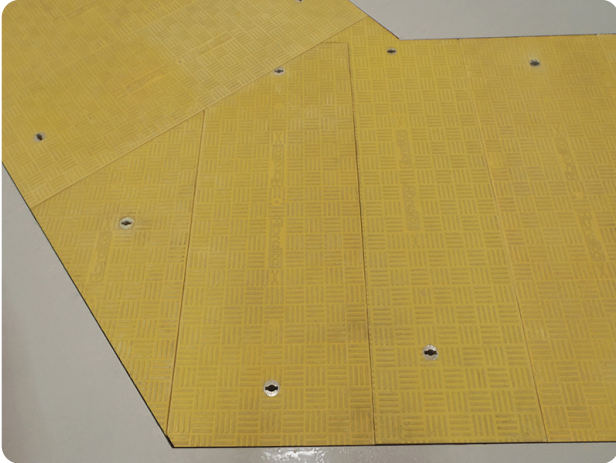
Bespoke trench covers for complex corner sections



Fibrelite covers needed to be manufactured to work with pre-installed steel supports

Fibrelite's access covers are lightweight, durable and very strong. Every Fibrelite cover is manufactured using high technology resin transfer moulded (RTM) production methods to create a highly engineered, monolithic composite product.

Due to the complexity of this application, the trenches were pre-made with steel support structures in place. For Fibrelite the challenge was to somehow design the trench covers to fit an existing trench that had been designed for an alternative solution.



Chemically inert and corrosion resistant

Working to an extremely tight deadline and challenging conditions, Fibrelite manufactured a completely bespoke trench panel arrangement. Widths and depths had to be changed and panels cut to exact dimensions to accommodate corner sections and service sections. Fibrelite's lightweight standard duty composite trench cover was identified as the solution. Designed as a 'fit and forget' product, the maintenance free covers provide easy and safe access to the essential pipework.

For more information on Fibrelite's product range please contact us:

UK Office:

Tel: + 44 (0) 1756 799 773

Email: covers@fibrelite.com

US Office:

Tel: + 1 919 209 2404

Email: covers@fibrelite.com

Malaysia Office (Asia Pacific):

Tel: + 44 (0) 1756 799 773

Email: covers@fibrelite.com

Sophisticated Highly Specialised Material

Fibrelite is the world leading manufacturer of glass reinforced plastic (GRP) composite manhole covers and trench covers. This sophisticated and highly specialised material is fast becoming recognised as the more effective modern alternative to traditional materials such as heavy steel and concrete.

Benefits over metal and concrete covers:

- Lightweight for easy and safe manual removal
- Load ratings from A15 to F900 (BS EN 124)
- Chemically inert and corrosion resistant
- Anti-slip/skid properties

Highly Effective in Preventing Heavy Lifting

Fibrelite's trench covers have proved highly effective in reducing health and safety issues and potential damage to essential pipework.

No Compromise on Performance

Upon request, Fibrelite can provide bespoke and custom solutions. This means that the panel dimensions, internal stiffeners and fibre architecture can be altered to optimise the performance of each panel based on project specific design criteria.

Benefits of Fitting a Fibrelite

- Customised solutions
- A fit and forget product that will not corrode or fade
- Improved productivity for both operational and maintenance crews
- Improved health and safety practices
- Technical support